

# AMI AutoAGENT *enhance the way you work...*

(FEATURES OVERVIEW)

- Order Management of:
  - 830/862/850 Orders
  - Hard Copy 830 Material Orders
  - One Time Spot Buys

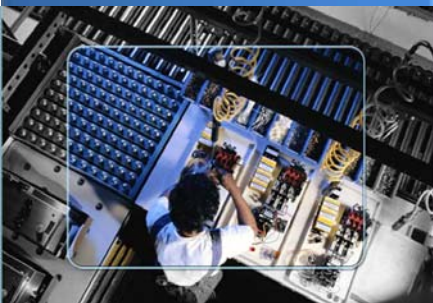
Model Year Change Over CUM Management Utilities

Historical Release Management and Reporting

Order Inquiries

Release Net Change Reporting

Runs on Microsoft Dynamics™ GP

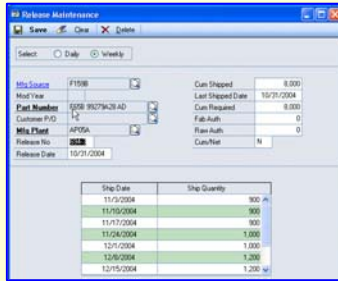


## Release Manager

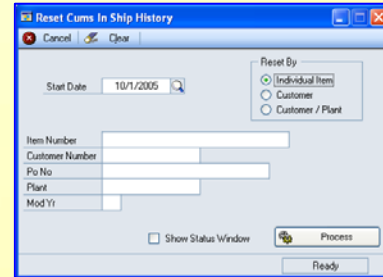
**ENSURE ORDER ACCURACY.** The AMI AutoAGENT Release Manager eases the management of releases, customer CUMS, customer authorizations, and model year-end cum resets. Release Manager tracks changing order requirements and updates AutoAGENT ERP system modules .

**SAVE TIME AND EFFORT** less keystrokes translates into less errors translates into improved accuracy.

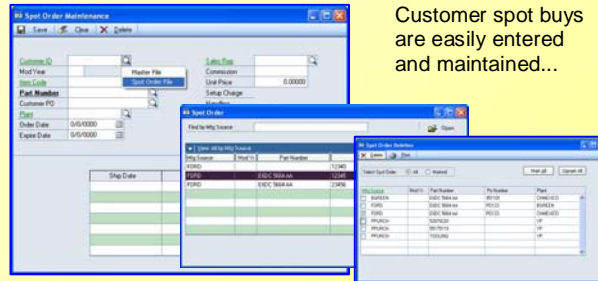
Easily maintain 830 material releases and 862 ship schedules...



Reset CUMS for a single item, entire customer, or a specific plant.



Customer spot buys are easily entered and maintained...



**CUT COSTS and IMPROVE OPERATIONS** with automated updating of customer orders you ensure data access and data accuracy across your enterprise.



Microsoft Business Solutions



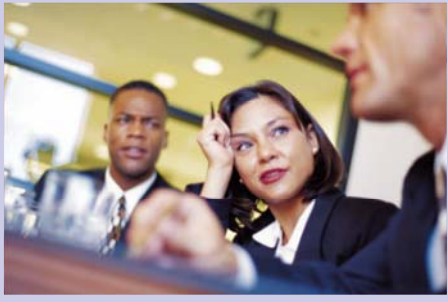
Automated Media, Inc.  
12171 Beech Daly Road  
Redford, Michigan 48239

Visit: [www.auto-med.com](http://www.auto-med.com)  
Email: [sales@auto-med.com](mailto:sales@auto-med.com)  
Phone: (313) 937-5000 x170

Enterprise  
Resource  
Planning

Customer  
Relationship  
Management

Financial  
Management



## CUT COSTS AND IMPROVE OPERATIONS



Microsoft Business Solutions

AMI AutoAGENT ERP enhances the flow of information throughout your company. As a result, the accuracy and the speed of your production is increased allowing you to do more with less. This translates into more profitable operations without sacrificing quality, delivery, or price. Here are just some of the benefits you will experience after implementing AMI AutoAGENT ERP:

- Enhance your environment** The AMI AutoAGENT ERP business solution is built on Microsoft .NET technology and is seamlessly integrated with Microsoft Dynamics GP. These solutions work like and with familiar Microsoft software, which means less of a learning curve for your people, so they can get up and running quickly and focus on what's most important for your business.
- Less data entry and errors** With AMI AutoAGENT ERP, all of your company's information is organized into one seamlessly integrated system. There is no need for re-keying of information by different departments and there is less need for manual paperwork. This greatly reduces the potential for errors.
- Cut operations Costs** Key Performance Indicators allow decision makers insight into what is going right or wrong within their demand production environment. AMI AutoAGENT ERP provides historical and real-time visibility into these indicators. Problems can be identified and adjustments can be made sooner rather than later, with confidence.
- Increase throughput** AMI AutoAGENT ERP monitors resource availability. As demand is generated, resources are automatically allocated. Production is given visibility to potential bottlenecks allowing for appropriate adjustments to scheduling. This creates greater efficiency while reducing downtime and overtime.
- Value delivered** When a business management solution works the way your current technology works, it fits easily and seamlessly into your existing systems and helps you maximize your technology investment. Software that's roles-based and targeted around the specific jobs people do can provide tremendous value and insight because it:
- Is familiar, helping reduce the time required to learn how to use it, and freeing up time to focus on what matters most.
  - Fits with your systems, helping to maximize your investment in Microsoft technology.
  - Fuels your business productivity, automating your business-critical operations and adapting to fit into your type of business, helping to ensure the most relevant insight.
  - Helps enable confident decision making, providing you with more complete insight across your organization.



**Shorten Transaction Cycles**  
**Reduce Inventory Costs**  
**Eliminate Missed Ship Dates**

**Decrease Production Costs**  
**Ensure AIAG Standards**  
**Stamp Out Production Errors**

**Ship the Right Product**  
**Improve Resource Allocation**  
**Enhance Communication**